

# **Bead-n-Stitch**

## **Professional Design and Pattern Making Software**

### **Bead N Stitch Quick Start Guide**

**Last modified by tbird 0333 14apr2019**

Hi, and welcome to Bead N Stitch (BNS), the world's foremost software for creating beading and cross stitch designs! BNS is an extended, enhanced and updated version of the widely known BeadCreatorPro, from the original developer, Igor Kotelevskii. You can create stunning designs based on photographs, pieces of art, or freehand drawing within this application. You can easily combine beads and stitches in the same pattern; incorporate palettes from multiple manufacturers (and create your own palettes); and mix up symbols in your design to indicate different shapes and sizes of beads.

In this Quick Start Guide, we'll explain how to import a digital image into BNS and create your first design. When you're comfortable with this process, you'll be ready to explore BNS editing tools, take a shot at designing a pattern freehand, or play with the stitching capabilities. You'll find detailed documentation and additional how-to guides on our website: <https://bead-n-stitch.com/>

#### ***Installation***

BNS receives regular updates to stay fully compatible with all PC operating systems: XP, Vista, 7, 8, 8.1, 10 and future versions. BnS also runs well on Macs with Intel processors and the addition of other software. Consult our website for more information.

You can download the free demo version of Bead N Stitch at <https://bead-n-stitch.com/free-demo/> or download the paid version from the link you received in your purchase confirmation email.

At the end of your successful installation, you'll see this pop-up window:

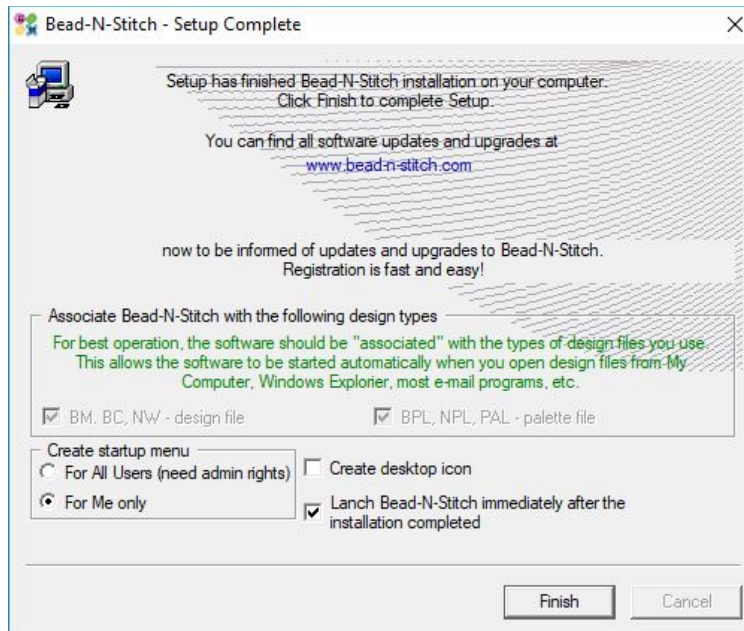


Figure 1: the successful install screen

When you click *Finish* Bead N Stitch launches:

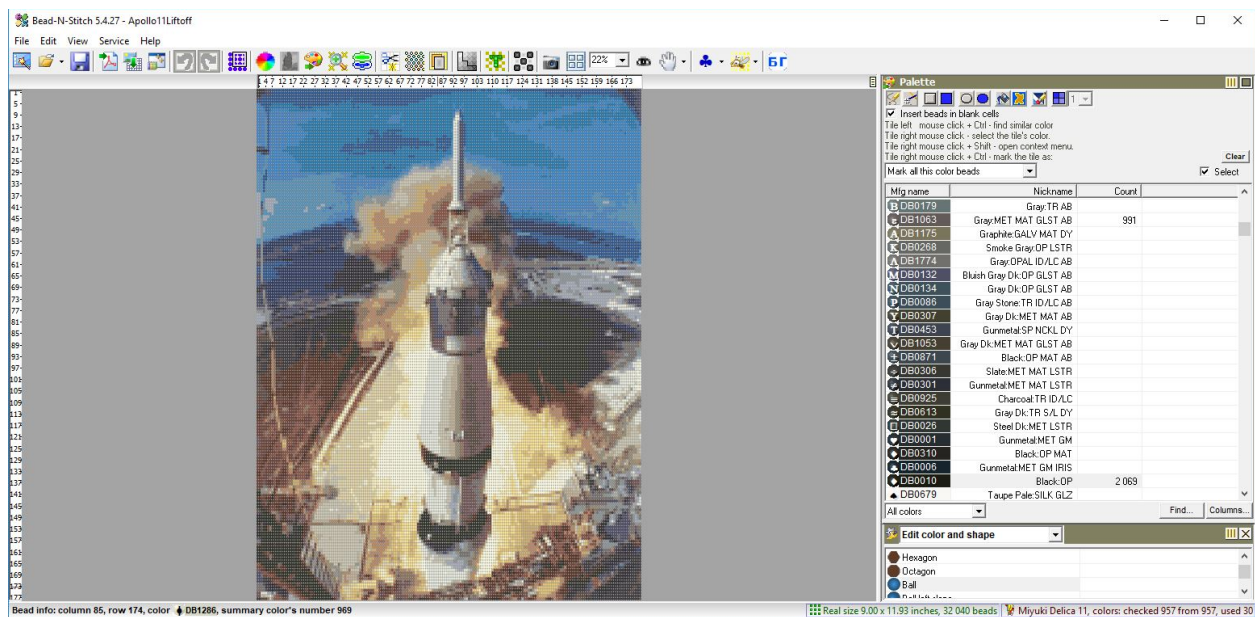


Figure 2: When started, BNS opens the last design you worked on

Note: if this is the first time you've used Bead n Stitch, no design will display.

## Create a New Design

From the application, go to *File* ---> *New*

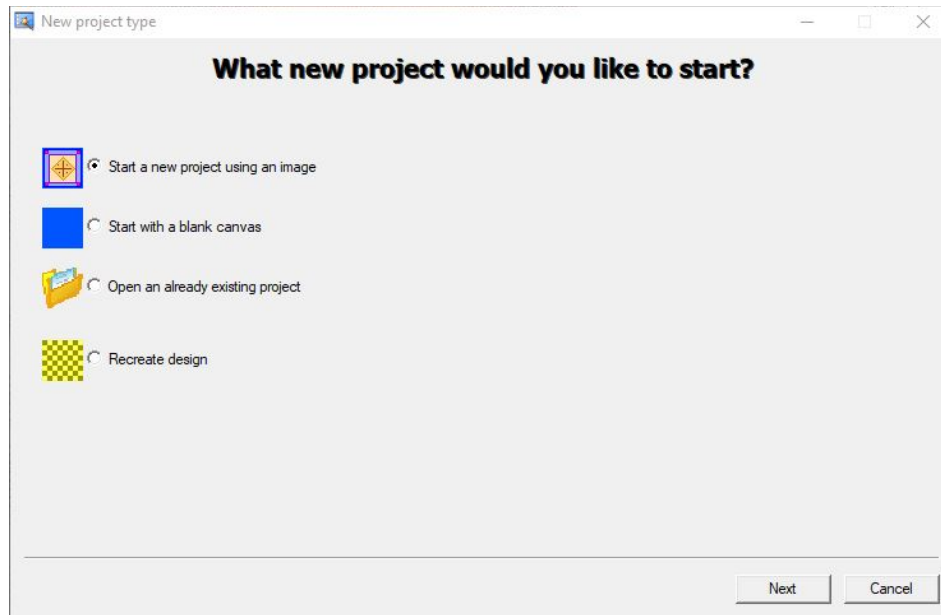


Figure 3: the first dialog box in the process for importing your image

BNS defaults to creating a new design with an image on your computer. Click *Next*.

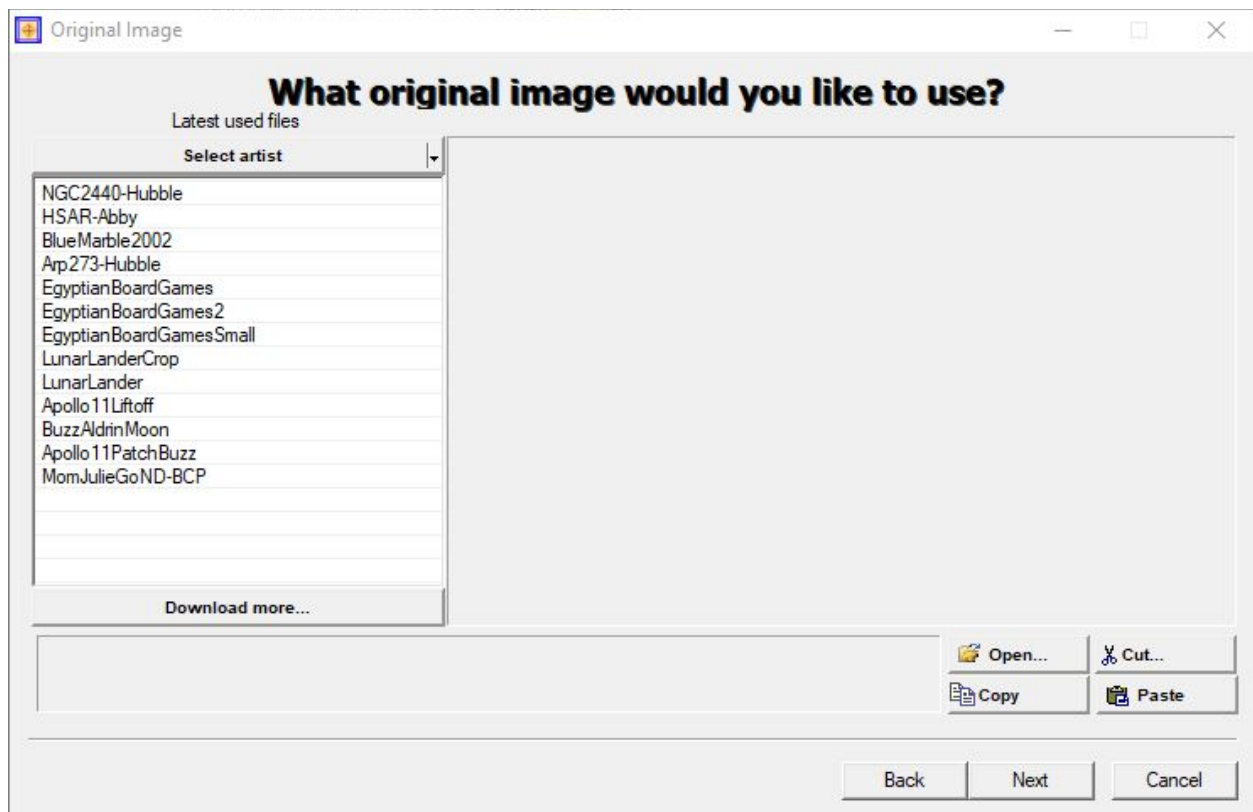
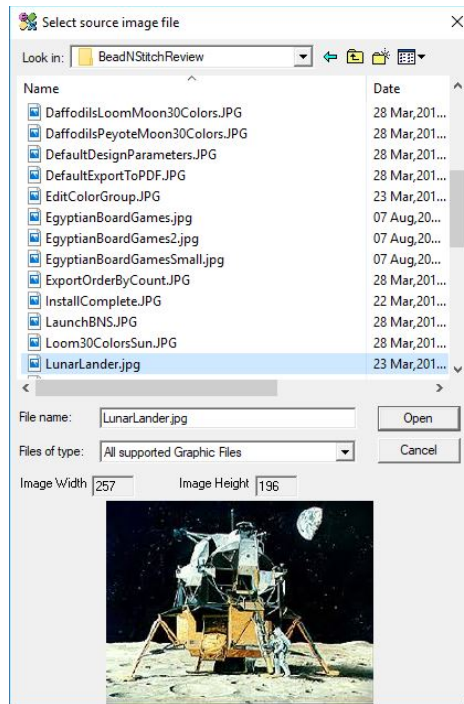


Figure 4: the Original Image selection dialog

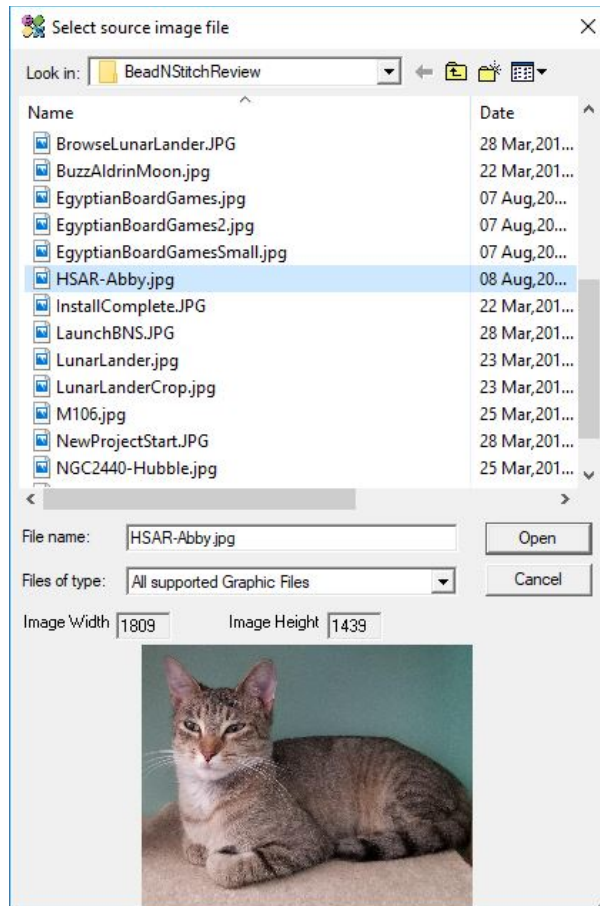
BNS prompts you to choose a recently opened file, or to select an image file from your computer.

When you click on *Open* and browse to the folder containing your pictures, BNS will show you everything that's in a supported format. BNS lets you preview images for all supported formats (JPG, GIF, PNG, TIF, Photoshop)...



*Figure 5: the Select source image file dialog allows you to preview all the pictures in the folder you've selected*

...to easily pick the image you want:



*Figure 6: Finding Abby's picture*

Click on *Open*:

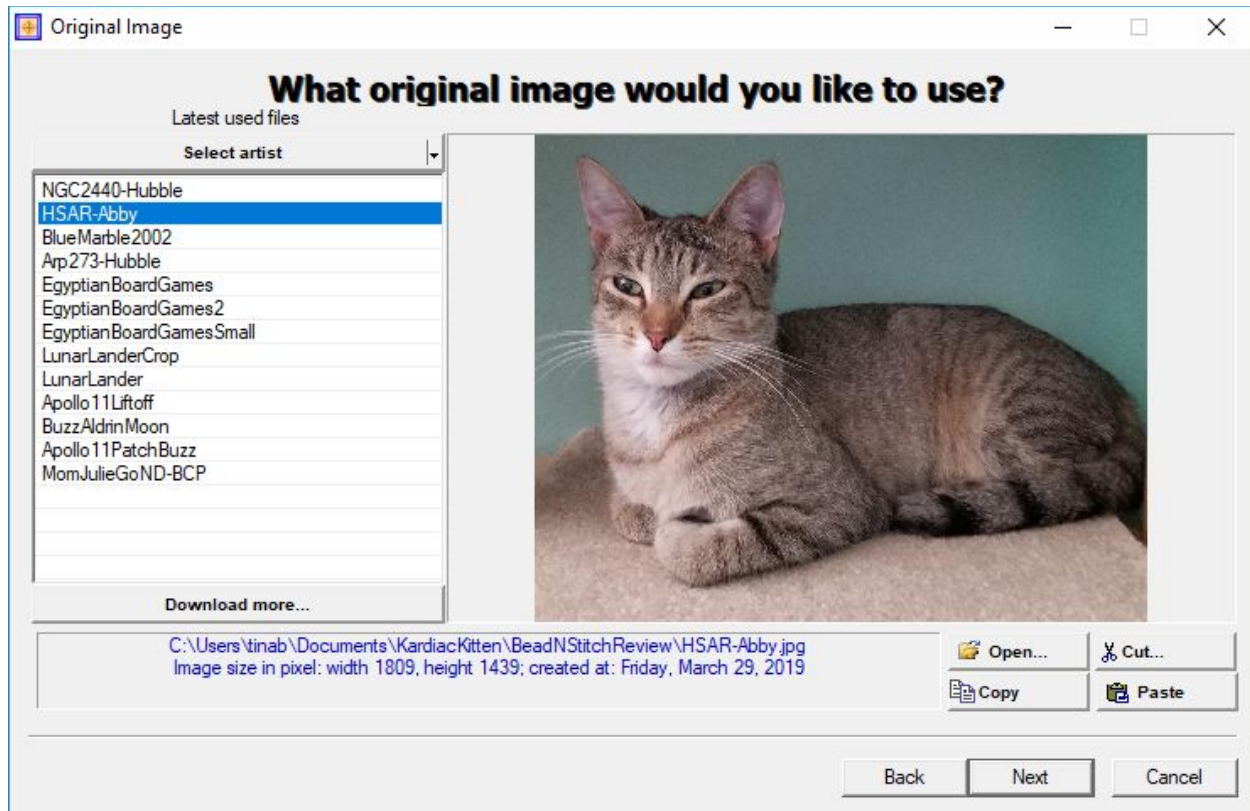


Figure 7: Finalizing the selection of the original image

Click **Next**.

### **Select Your Design Palette**

BNS comes with a variety of bead and thread palettes pre-loaded. Palette names include the manufacturer, style of bead (if appropriate), size designation (if available), and number of colors. So, for instance, “Miyuki Delica 11 957” means Miyuki Delica beads, size 11/0, 957 different colors. “Toho 437” specifies all 437 colors of Toho beads but doesn’t specify the style or size. “Toho 15 264” means Toho 15/0 rocaille seed beads, for which there are 264 colors available.

The larger the palette you choose, the more colors BNS has to match your image. A smaller palette means a simpler design, with less accurate color reproduction.



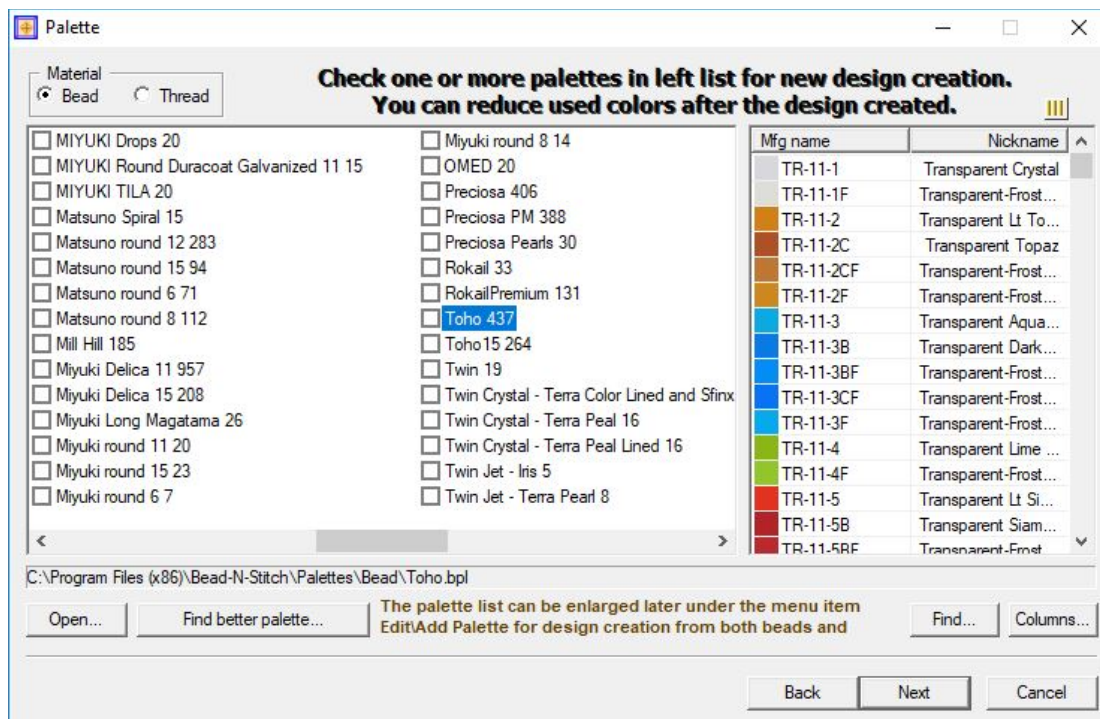


Figure 8: the Palette dialog with the default Toho palette selected (not all colors may be available in all bead shapes offered)

Clicking on a palette will show you the manufacturer's ID and nickname for the colors it includes (as well as the screen appearance of the color, if available):

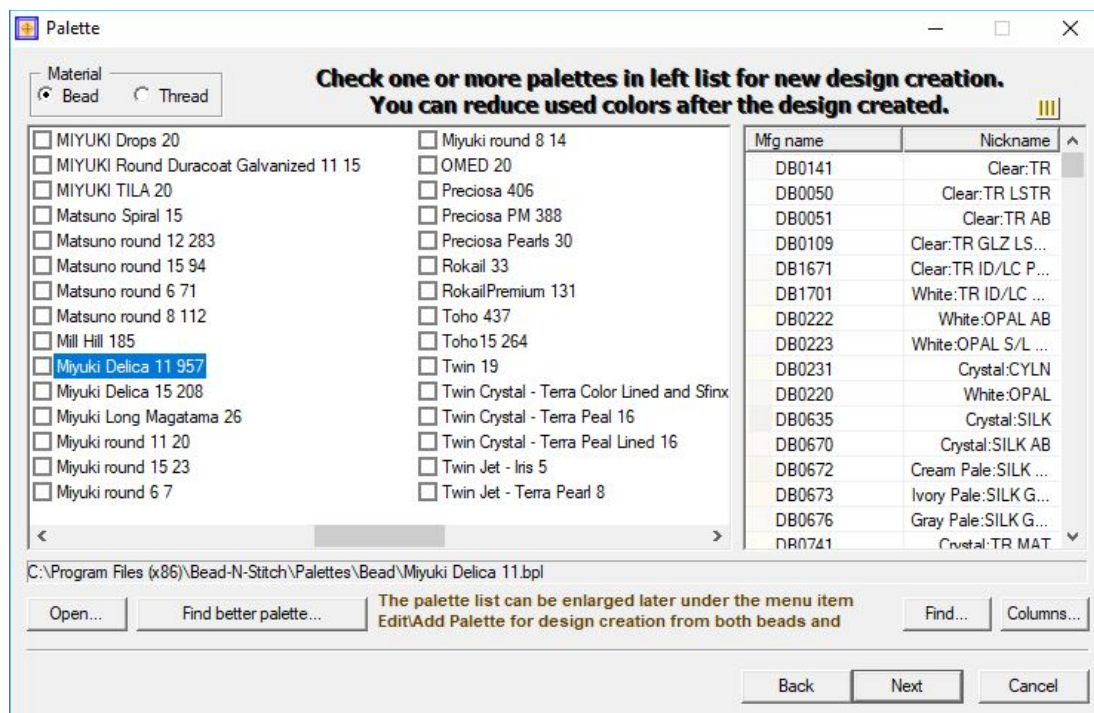
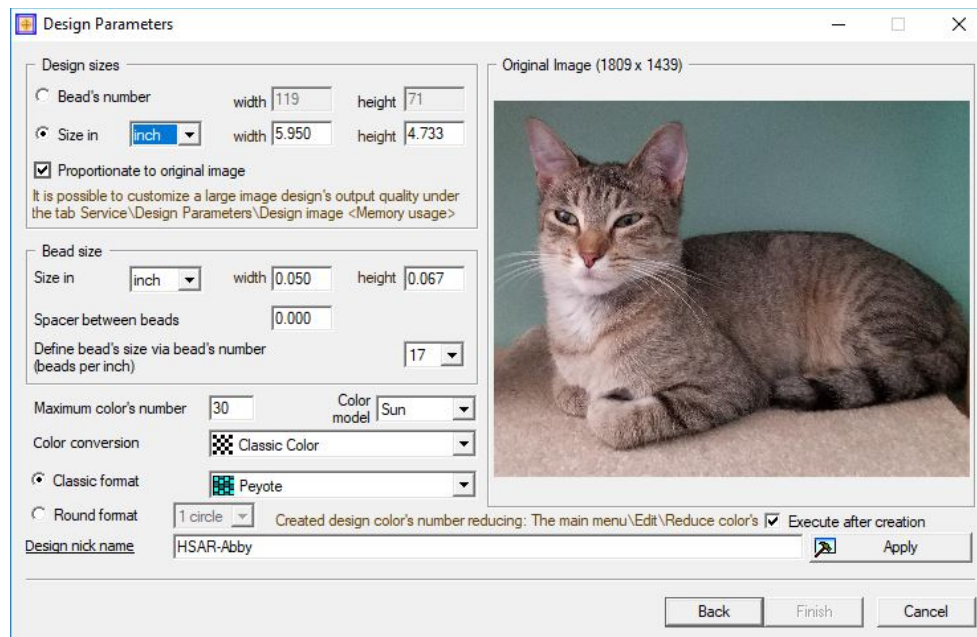


Figure 9: the Palette dialog with the Miyuki 11/0 Delica palette selected

You can create custom palettes, and add additional palettes to your design once you're through the setup process. My bead stash is mostly Miyuki Delicas, so that's the palette I'm using.

Click *Next*.

### **Select Your Design Parameters:**



*Figure 10: the Design Parameters dialog*

There's a lot to see here. Let's take a quick look at what all these parameters mean.

**Design sizes** (Figure 10, top left) lets you specify the physical size of the art you want to create. You can set this in terms of the number of beads, which (depending on the weaving technique you use) roughly equates to rows and columns; or in terms of inches, centimeters or millimeters. BNS defaults to maintaining the aspect ratio of your original image.

**Bead size** (Figure 10, middle left): Although seed beads are described as round, they're not. The difference between height (how much thread the bead takes up when you string it) and width (the size of the hole plus the "sides" of the bead) affects the conversion between rows/columns/physical dimensions. (To put it another way, cross stitch generally uses canvas that has the same number of threads per inch in both dimensions. Weaving with seed beads is the equivalent of cross stitch on a canvas with different thread counts in the two dimensions.):



***Dimensions of beads most often used in tapestry weaving:***

Bead type	Height (mm)	Width (mm)	Notes
Miyuki 11/0 Delicas	1.6	1.3	Round & hex cut
Miyuki 15/0 Delicas	1.3	1.15	
Toho Aikos	1.8	1.5 (approx)	
Toho 11/0 Rocailles	2.3	1.3	
Jablonex 11/0 Rocailles	2.1	2.3	Width calculated assuming 11 beads per inch
Generic 11/0 Rocailles	2.3	1.7	May vary widely between manufacturers

*Maximum color's number* (Figure 10, lower left) Allows you to specify the number of colors BNS will use, out of the total available in the palette, to match your image. This defaults to 30. Increasing the number of allowed colors preserves small details of your image in your final design.

*Color model, Color conversion* (Figure 10, lower left) allow you to tweak the way BNS converts the color information in your image to the colors and sizes of beads in your palette.

*Classic format* (Figure 10, lower left) controls the bead weaving technique in your design. Peyote, brick, and loom are the most common.

*Design Nick Name* (Figure 10, bottom) will display across the title bar. The default value is based on the name of the image file you selected.

The default values for these fields are best guesses. You have to specify the design and bead sizes, and the beading format. These parameters cannot be changed once BNS finalizes the design, which is when you click on *Finish*.

For my first pass at Abby's portrait in peyote stitch, I've specified a relatively small design size -- roughly 6" x 4.75". Clicking the *Apply* button gives me a preview of the finished design.

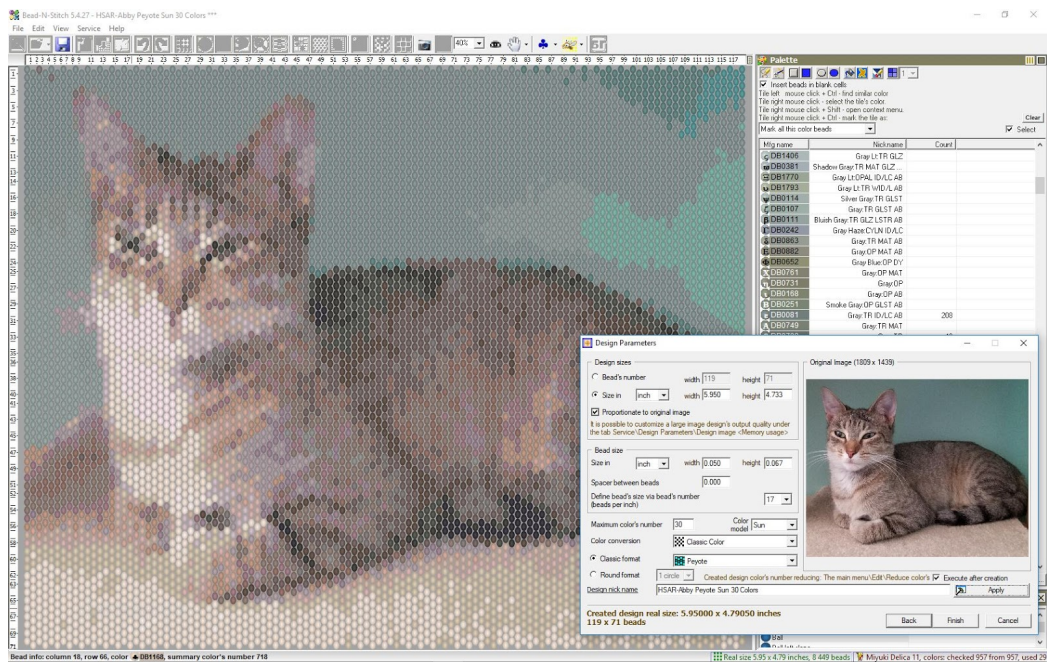


Figure 11: portrait of Abby at 6" x 4.75" (approx)

At this size, my final design blurs the details of Abby's face -- there aren't enough beads in that part of the design to show her eyes or stripes clearly. If I double the size, to 12" x 9.5", her face looks much better:

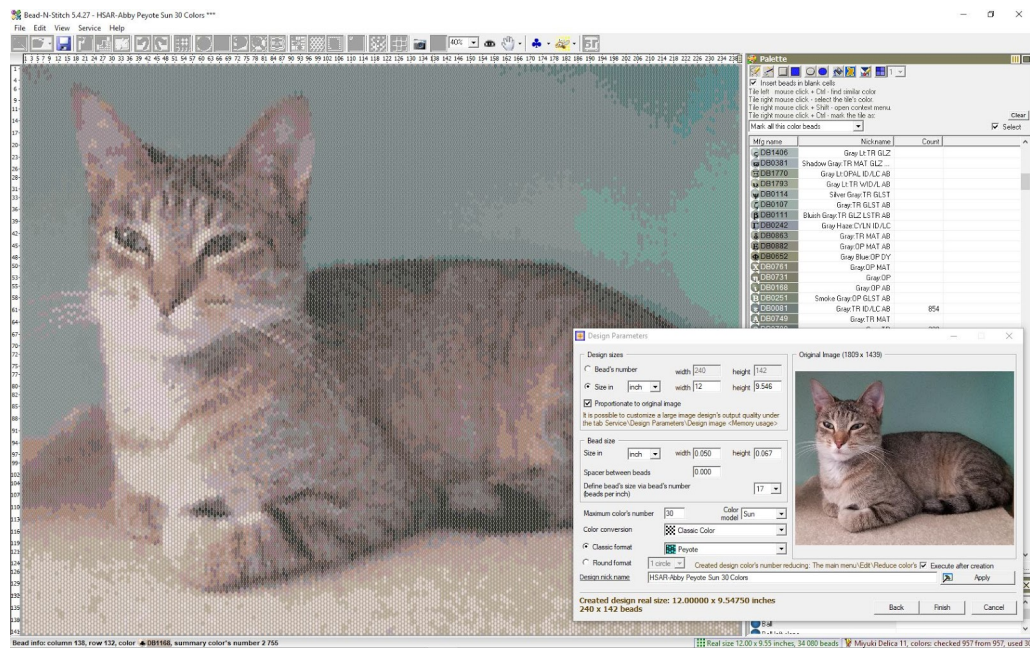


Figure 12: portrait of Abby at 12" x 9.5"

You can experiment with all the parameters in the design window to find the final design you like the best. Once you've got it, click *Finish*.

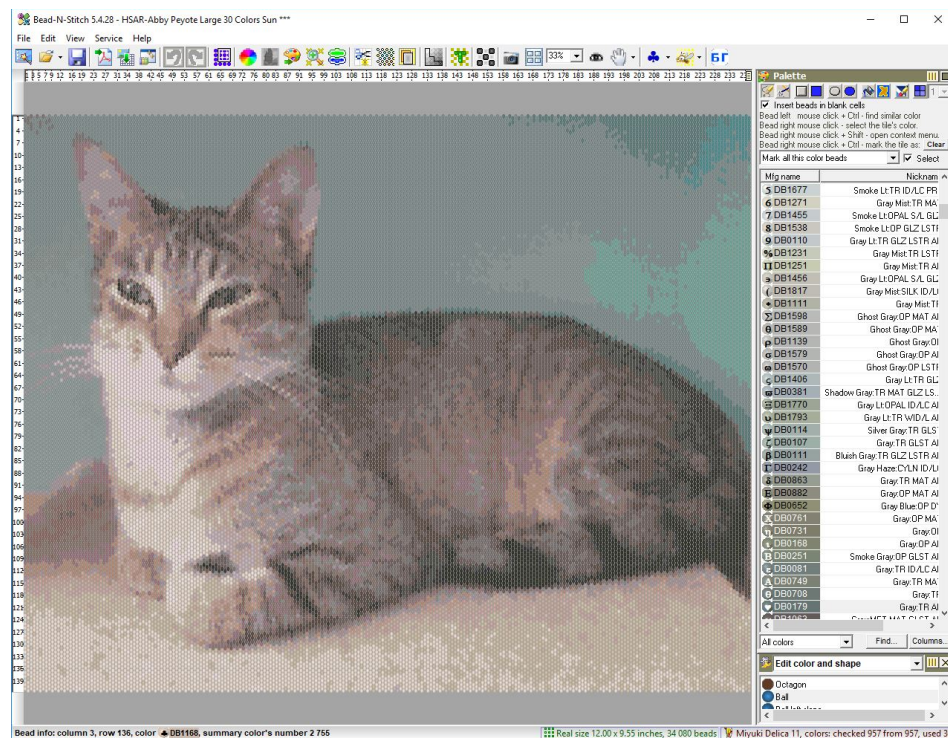
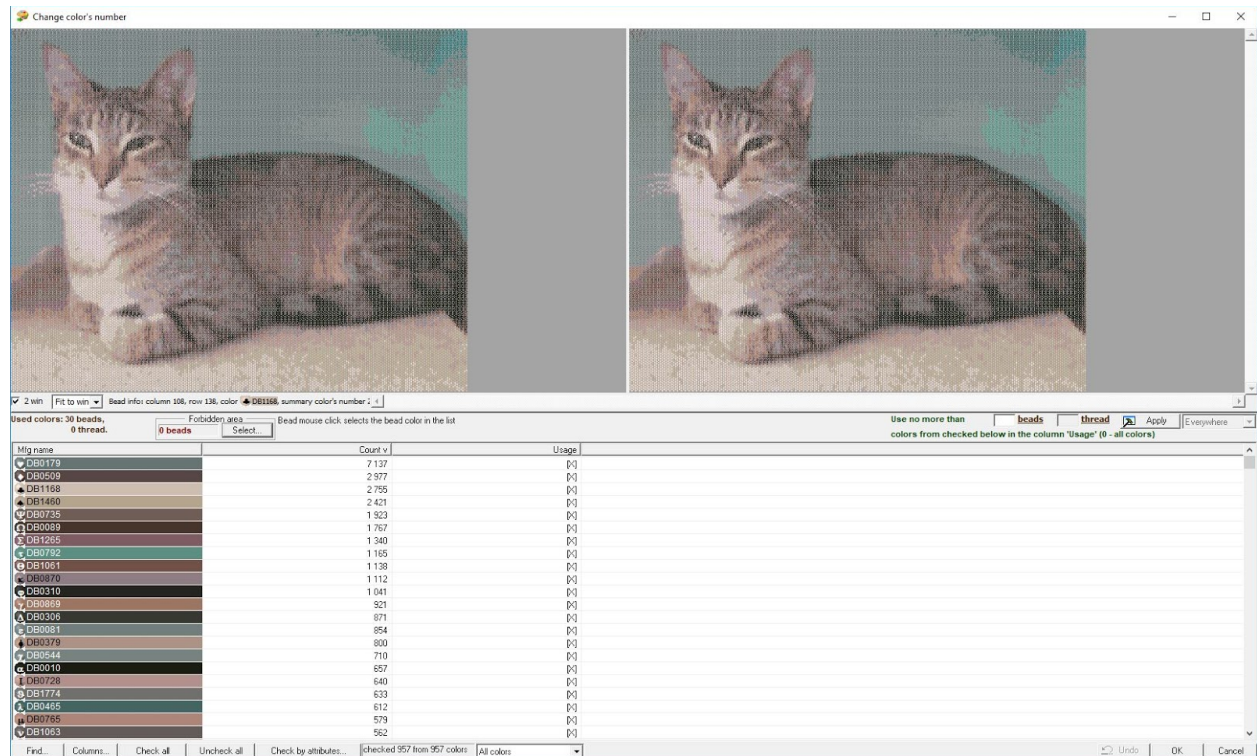


Figure 13: the in-process BNS design window (after the import process is finalized)

## Change Color's Number

The selection of palette colors is the most personal “decision” made by BNS when converting an image file to a craft technique. So by default, after you finish your design, BNS presents you with the *Change Color's Number* tool.





*Figure 14: the Change Color's Number dialog -- increase or decrease the number of colors in your design*

You can increase or decrease the number of colors on the right, and BNS will display the changes. Generally speaking, designs with smaller numbers of colors are easier to weave (or embroider), and may be less expensive depending on your bead inventory. However, decreasing the number of colors will blur out small details in the design, and may reduce the brightness of some of the colors BNS chooses.

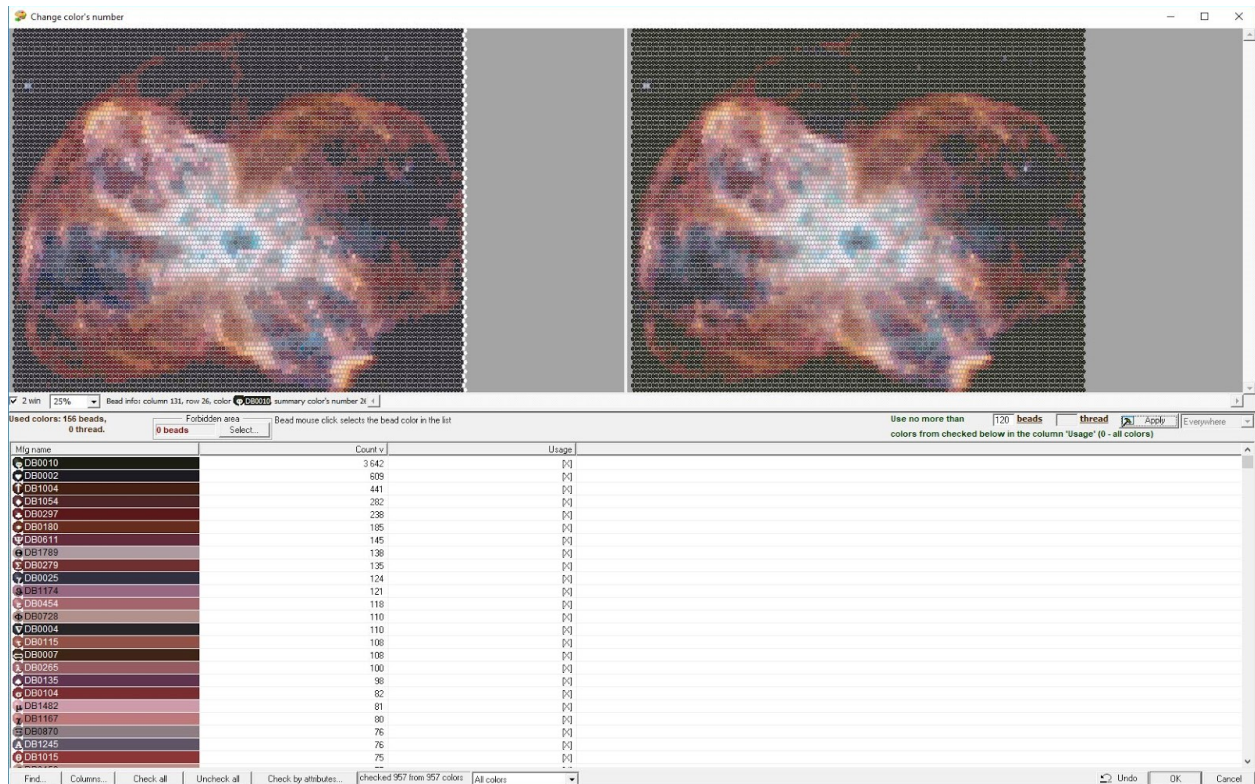


Figure 15: the original image is on the left, the image with the new number of colors on the right

If you enlarge the above image on your computer and compare the before and after sides carefully, you'll see that the image on the right -- with 50 fewer bead colors -- is a bit smaller and has lost a number of the smallest details. [This is a picture from the Hubble Space Telescope. It's great for showing how details change because it has a lot more details than my picture of Abby does!]

Note: BNS has several sophisticated tools that allow you to reduce the overall number of colors on a more selective basis -- to highlight what your sense of art tells you are the important parts of your design. We'll cover these features in additional user guides.

Larger numbers of colors improve the accuracy of the image reproduction, but will be more complicated to work with and may be more expensive.

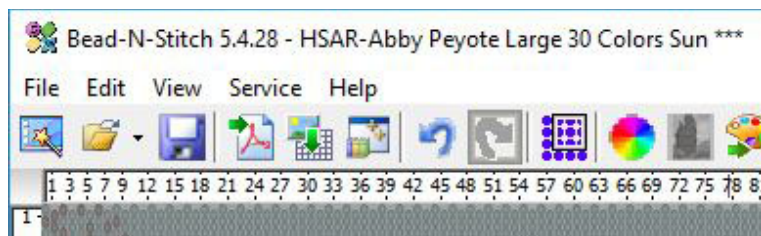
## Save Your Design

When you're back at the BNS design view, save your design by either clicking on the disk icon in the menu bar, or navigate to *File* ---> *Save*. By default, BNS saves designs in the "Designs" folder under the install directory (on my Windows 10 machine, that's C: > Program Files (x86) > Bead-N-Stitch > Design).

If you want to save your designs to a different location, use *File* ---> *Save As*.

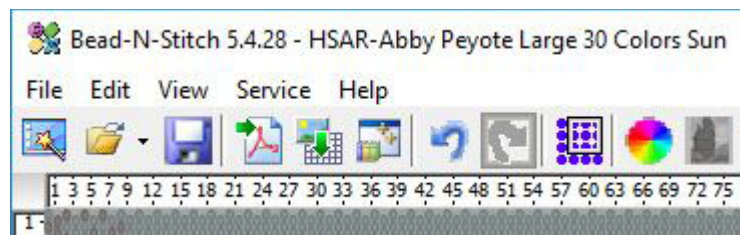


BNS tells you when you've made changes you need to save by following your design nickname with 3 stars:



*Figure 16: note the three asterisks following the nickname*

The stars disappear when your design is saved (and safe):



*Figure 17: when all changes are saved the asterisks vanish*

### ***Bead Budget***

I'm more interested in the colors BNS chose for my image than I am in the entire Delica palette, so I select *Used colors* in the drop down menu at the bottom of the Palette sidebar (and enlarge the BNS window so I can see the last column in the menu):

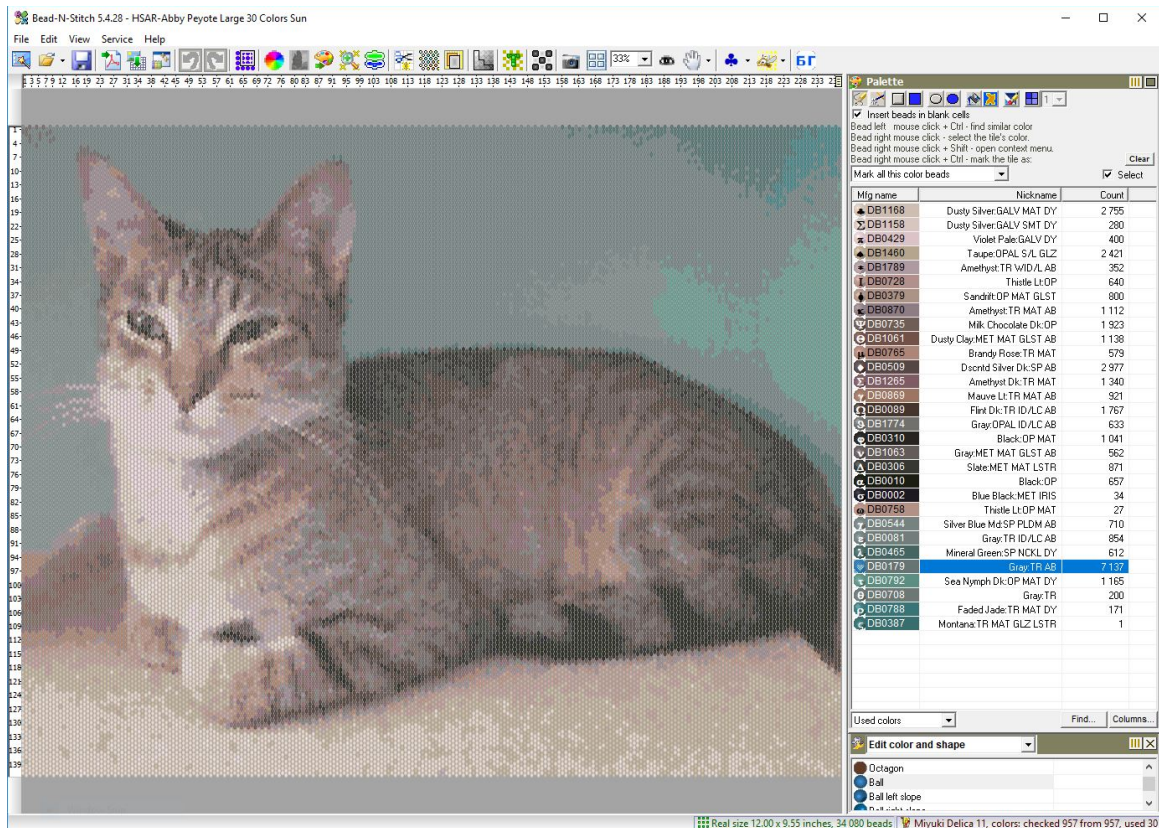


Figure 18: my finished design, showing the number of beads I'll need for each color

1 gram of Delicas is about 200 beads, so you can convert bead counts to whatever weight is used by your favorite bead vendor:

5 g = 1000 Delicas  
 7.2 g = 1440 "  
 10 g = 2000 "

Note: computer monitors vary, and the ability of any program to accurately reproduce all the variety of bead colors, finishes and treatments on a computer monitor is limited. As you gain experience with how BNS converts digital images to bead or stitch designs, you will learn how to modify its selections to match your own preferences, if you need to.

BNS gives you a wide variety of ways to edit your design, far too many to cover in a quick start guide. But assuming that you're happy with your design, the next step is to generate a PDF.

### Generate Your Printable File

Click on *File* ---> *Export Into PDF*

**Export pattern into PDF**

Export Design | Page Layout | Protection/Properties

Properties (attributes, comments and statistics)

☐ Output Export pattern based upon it Nickname. You can edit the Nickname and other properties by clicking button: [Edit...](#)

Preview

☒ Whole design One page Pixels by bead 23 Back color... ☒ Bead's rulers

☐ Separated images for all palettes and bead/stitch sizes

☐ Collage design ☐ Include prior rows bottom to top ☐ Include original

Used color's list

☒ Output You can manage the list columns and their order with by clicking button: [Columns...](#) [Format...](#)

☒ Separated...

Mfg name	Nickname	Count
DB0179	Gray:TR AB	7 137
DB0509	Dscntd Silver Dk:SP AB	2 977
DB1168	Dusty Silver:GALV MAT DY	2 755
DB1169	T... GALV MAT DY	2 421

**Color's coding** Font Symbol <Symbol> for Grid, Color map, Word

Grid

☒ Output as Separated grids for all palettes and sizes

Beads in block no more than Width 40 Height 50 Text color Real color Symbol format Text [Lines...](#)

Select beads number 30 x 30 Block numbering Always from 1

Beads number in block depends on font size - see <Layout> tab

Color map - separate pages for each color location

☐ Output as ☒ Whole design ☐ By block size 70 ☒ Mark block location with red color ☒ Begin each block numbering from 1

Word Chart

☐ Output as ☒ Table ☐ Columns Chart format Rows Left to Right reverse 2 columns Chart style obvious Separator ☐ ☐ Color text output

Output sections font size (Properties, Color List, Grid, Word Chart) defines PDF document pages number. You can select necessary font sizes on 'Page Layout' tab.

Export into file [C:\Users\tinab\Documents\KardiacKitten\BeadNStitchReview\HSAR-AbbyPeyoteLar](#) [Browse...](#)

[Use](#) above parameters while a new design creation [OK](#) [Cancel](#)

Figure 19: the Export Into PDF dialog

Bead N Stitch *Export Into PDF* pulls together all the information on your design into a single file you can print and use to work. The default configuration provides a one page snapshot of your design; the list of bead (or floss) colors, with counts; and depending on the size of your design,

one or more pages of the enlarged design chart with symbols. If the working design chart is carried over more than one page, you also get a grid diagram that shows how to piece the segments together into the complete design.

Your image may look a little funky in the enlarged chart pieces -- this is because the cell used to represent an individual bead does not have the same ratio of height to width as the beads do.

By default, BNS saves designs in the "PDF Export" folder under the install directory (on my Windows 10 machine, that's C: > Program Files (x86) > Bead-N-Stitch > PDF Export). If you want to change the default location, click on the *Browse* button at the bottom of the *Export Pattern Into PDF* dialog box.

### ***Save Your Design Again***

Before you print out your design and grab your beads or embroidery floss, save your design file one last time! Remember: click on the disk icon in the menu bar, or use *File* ---> *Save*.

### ***Conclusion***

We hope you've enjoyed this introduction to design creation via photo conversion, with Bead N Stitch.

To continue your exploration of Bead n Stitch, please visit <https://bead-n-stitch.com/> and our Facebook page at **To-Be-Determined**.